

TECHNICAL DATA SHEET

LAPL IP65 / Aga-Power-Led® RGB

VERSION - 04.09.2015

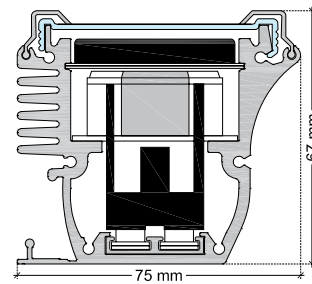
STANDARD LUMINAIRE

Reference	LAPL
Protection Class	IP65
Lighting Source	Aga-Power-Led® RGB
Connector	Festoon on B'Light conductor 16mm ²
Dimensions	75 x 67mm
Standard Length	110 - 495 - 990 - 1485 - 1980mm
Length on measure	on request up to 2970mm
Nb Lighting Unit	17 LED/m
Voltage	24V
Power	54.4 W/m
Connecting Cable	One Side: 1m cable PUR 4x0.75mm ²
Grid	Anti Glare: GAP
End Caps	EFLA

APPLICATION: Upward Lighting for Walls, Facades, Columns



LAPL / AGA-POWER-LED® RGB - Festoon



FINISH

Color Finishing Profil

Standard	Natural Anodised Aluminium
On request	Thermo-enameling Powder Coating RAL Color Anodising Polished Aluminium Chrome or Gold Aspect

Glass Finishing

Standard	Clear Glass
----------	-------------

ON REQUEST

Fixation	FLP Series
Recessed Box	See Data Sheet RAPI Luminaire
Connecting Plug	AMS / AF or AMS-E / AF-E (IP68)
Dimming Option	Dali, KNX <i>Ask technical departement for more information</i>

ON REQUEST

Connecting plug AF/AMS



Connecting plug AF-E/AMS-E (IP68)



LIGHTING SOURCE

Lighting Source	Aga-Power-Led® RGB		
Ref	03LP22_ RGB		
Voltage	24V		
Power	3.2W		
Beam Angle	120°		
CRI	80		
Light Output - lm/Unit	Red 28 ~ 34lm	Green 47 ~ 52lm	Blue 16 ~ 21lm
Lifetime/L70 at 25°	60'000h / 50'000h		
Working T°	-30°C ~ +50°C		

CERTIFICAT

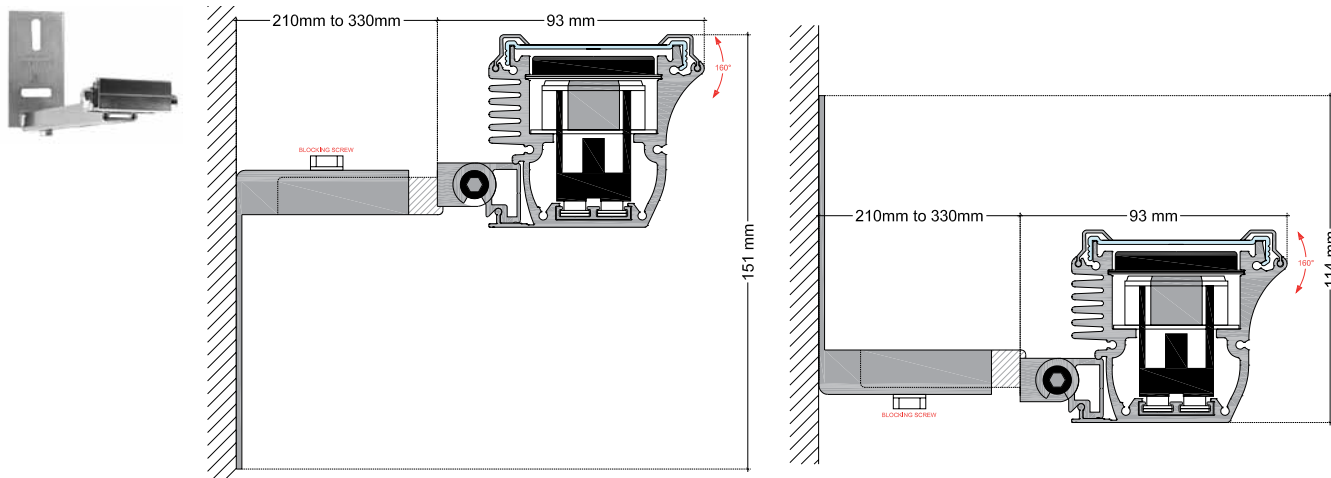


TECHNICAL DATA SHEET

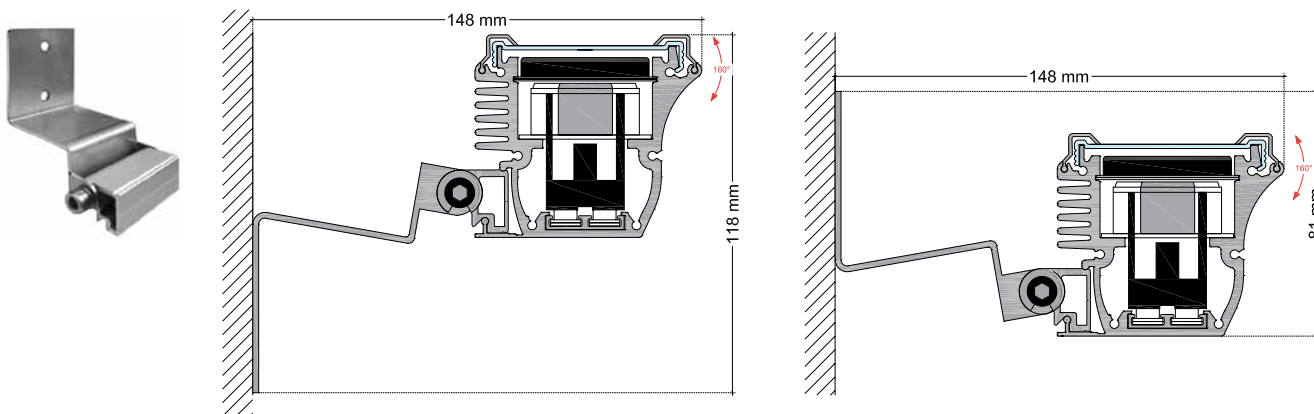
LAPL + FLP SERIES

VERSION - 01.09.2015

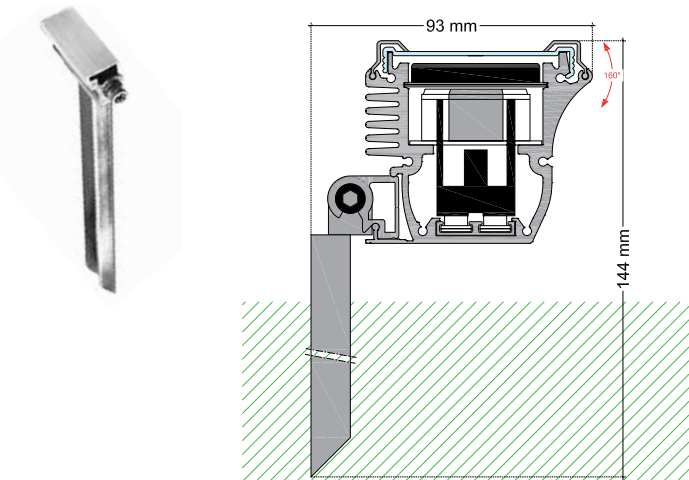
FLP2



FLP3

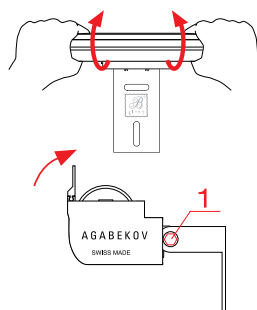


FLPJ



To unclip and clip the luminaire, lock the 'imbus' screw (1) and tilt the luminaire as shown on the drawings.

CLIP



UNCLIP

