

TECHNICAL DATA SHEET

LFAL IP20 / Aga-Led® Type A

VERSION - 06.07.2017

STANDARD LUMINAIRE

Reference	LFAL
Protection Class	IP20
Lighting Source	Aga-Led® Type A
Connector	Rigid Loop on B'Light conductor 16mm ²
Dimensions	13 x 28mm
Standard Length	330 - 670 - 1000 - 1330 - 1670 - 2000mm
Length on measure	on request up to 3000mm
Nb Lighting Unit	18 LED/m
Voltage	24V
Power	18 W/m
Connecting Cable	COS3: 1m standard cable 2x1.5mm ²

FINISH

Color Finishing Profil

Standard	Natural Anodised Aluminium
On request	<i>Thermo-Enameling</i>
	<i>Powder Coating RAL</i>
	<i>Color Anodising</i>
	<i>Polished Aluminium Chrome Aspect</i>
	<i>Polished Aluminium Gold Aspect</i>

ON REQUEST

Fixation	BFA (fixed with screw) FCP (fixed with screw) FCP-S (fixed with tape & screw)
Connecting Cable	COS4 - COS4a
Connecting Plug	AMS / AF
Dimming Option	1-10V, Dali, KNX <i>Ask technical departement for more information</i>

LIGHTING SOURCE

Lighting Source	Aga-Led® Type A
Ref	A10
Voltage	24V
Power	1W
Beam Angle	15°
CRI	80
Lifetime	60'000h
Working T°	-30°C ~ +55°C
Option	AGC: Anti Glare Optic



Color Temperature & Luminous Flux / Unit

CCT	2800K	4000K
Luminous Flux/Unit	40 lm	45 lm

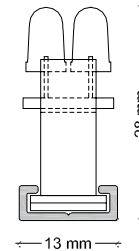
CERTIFICAT



APPLICATION: cornices, handrails, stairs, shelves



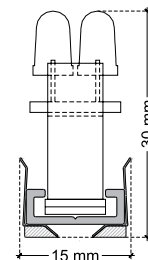
LFAL / AGA-LED® TYPE A - Rigid Loop



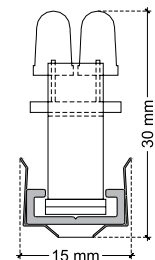
ON REQUEST: LFAL Fixation



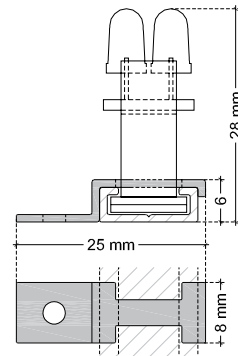
FCP-S (fixed with tape & screw)



FCP (fixed with screw)



ON REQUEST: LFAL Fixation BFA



ON REQUEST : Connecting plug AF/AMS

